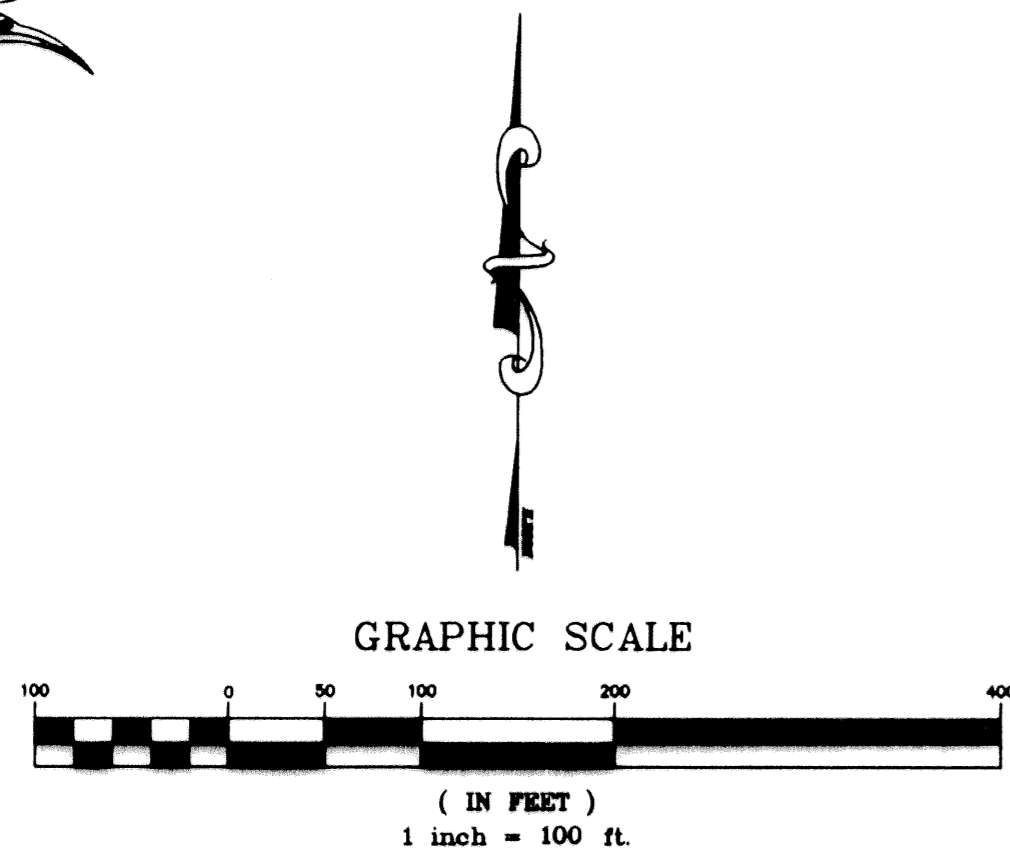




IBIS GOLF AND COUNTRY CLUB PLAT NO. 14

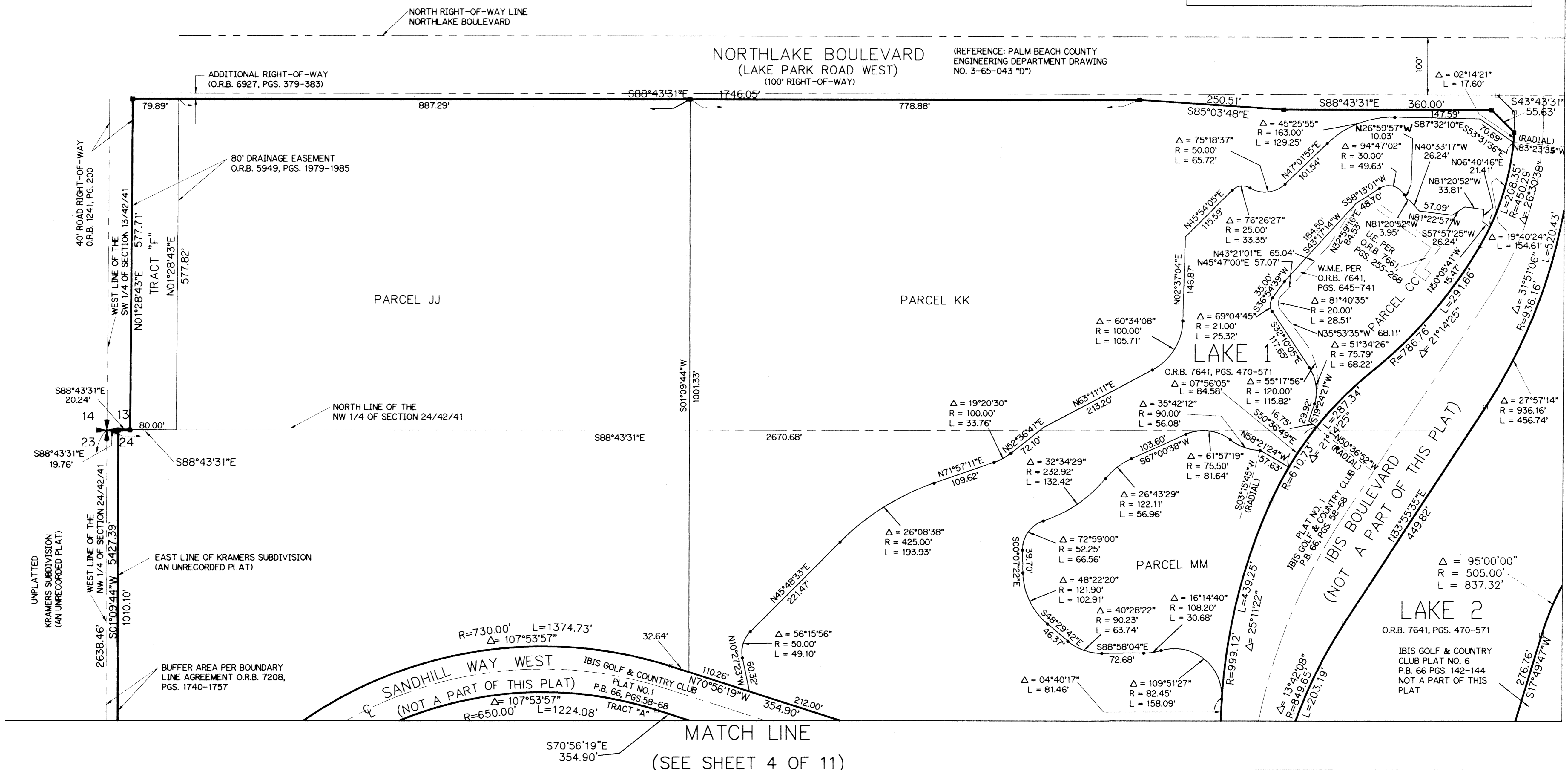
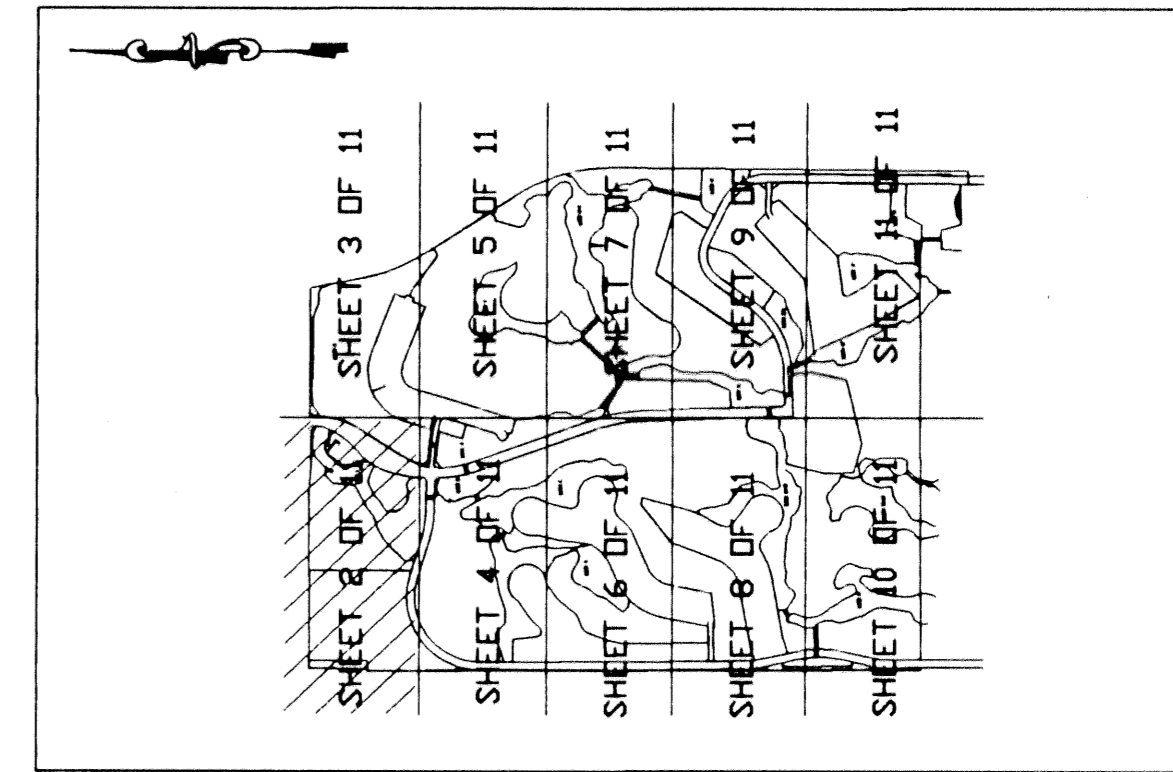
A PLANNED UNIT DEVELOPMENT
LYING IN SECTIONS 13, 24 AND 25, TOWNSHIP 42 SOUTH, RANGE 41 EAST
CITY OF WEST PALM BEACH, PALM BEACH COUNTY, FLORIDA

108



- LEGEND:
- O.R.B. - OFFICIAL RECORD BOOK
 - P.B. - PLAT BOOK
 - PGS. - PAGES
 - W.M.E. - WATER MANAGEMENT EASEMENT
 - - PERMANENT REFERENCE MONUMENT FOUND NO. LB 959
 - - PERMANENT REFERENCE MONUMENT SET NO. LS 4382
 - ⊕ - SECTION CORNER
 - ⊖ - ONE-QUARTER SECTION CORNER

KEY MAP
(NOT TO SCALE)



SUBDIVISION # Ibis Golf and Country Club Plat 14
BOOK 75 PAGE 108
FLOOD ZONE FLOOD MAP #
QUAD # ZONING
SE ZIP CODE
PUD NAME C/O West Palm Beach
15-24-25-42/41

MATCH LINE
(SEE SHEET 3 OF 11)

MATCH LINE
(SEE SHEET 4 OF 11)

lbf LINDAHL, BROWNING, FERRARI, & HELLSTROM, INC.
CONSULTING ENGINEERS, PLANNERS & SURVEYORS

210 JUPITER LAKES BLVD. SUITE 300 JUPITER, FL 33468 407-746-9248
2400 S.E. MONTEREY ROAD SUITE 201 STUART, FL 34996 407-286-3883
2222 COLONIAL ROAD SUITE 201 WEST PALM BEACH, FL 33409 407-461-2450
2000 PALM BEACH LAKES BLVD. SUITE 302 WEST PALM BEACH, FL 33409 407-684-3375